

State of Wyoming Corner Record

(In compliance with the CORNER PERPETUATION AND FILING ACT, Wyoming Statutes, 1997 Section 33-29-140 et. seq., and the Rules and Regulations of the Board of Professional Engineers and Professional Land Surveyors)
Reverse side of this form may be used if more space is needed.

Record of original survey and citation of source of historical information (if corner is lost or obliterated). Description of corner monumentation evidence found and/or monument and accessories established to perpetuate the location of this corner. Sketch of relative location of monument, accessories, and reference points with course and distance to adjacent corner(s) (if determined in this survey). Method and rationale for reestablishment of lost or obliterated corner.

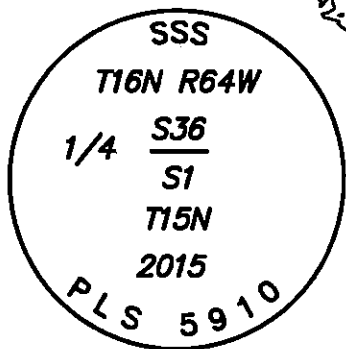
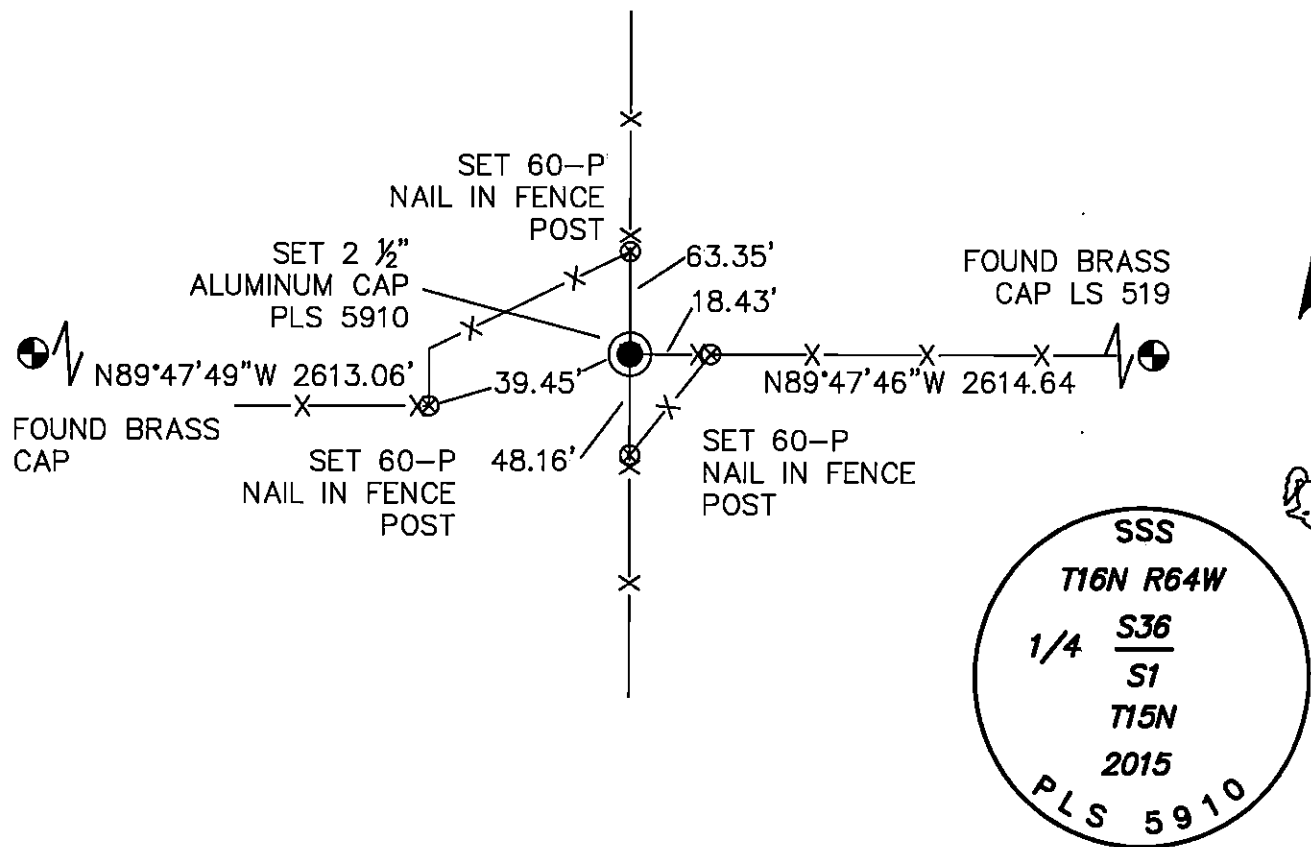
RECORD: SET LIMESTONE 18X12X8 FOR ¼ SEC. COR.

MONUMENT FOUND: FOUND BENT NAIL

MONUMENT SET: SET A 3/8"X24" REBAR WITH A 3/4" ALUMINUM CAP PLS 5910

REFERENCES: SET CAP 0.5' BELOW COUNTY ROAD SURFACE.

RECP #: 698873
RECORDED 12/23/2016 AT 3:13 PM BK# 2528 PG# 1206
 Debra K. Lee, CLERK OF LARAMIE COUNTY, WY PAGE 1 OF 1



DRAWING NOT TO SCALE

Date of Field Work: 01/22/2015 Office Reference: 15081

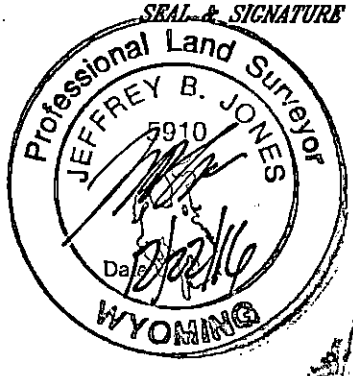
Monument Inscription

Cross Index Plat

	1	2	3	4	5	6	7	8	9	10	11	12	13	14	15	16	17	18	19	20	21	22	23	24	25
A																									
B																									
C		6			5					4					3						2				1
D																									
E																									
F																									
G																									
H																									
J																									
K																									
L																									
M																									
N																									
O																									
P																									
Q																									
R																									
S																									
T																									
U																									
V																									
W																									
X																									
Y																									
Z																									

Firm/Agency, Address
STEIL SURVEYING SERVICES LLC
1102 West 19th Street
Cheyenne, Wyoming 82001
 Telephone Number: (307) 634-7273

This corner record was prepared by me or under my direction and supervision.



Corner Name N ¼ Corner Section 1, T 15 N, R 64 W, 6th P.M. Cross-Index No.: A-23
 County: LARAMIE Wyoming
 SBRPEPLS/PLSW: March 1994; PLSW January 1998